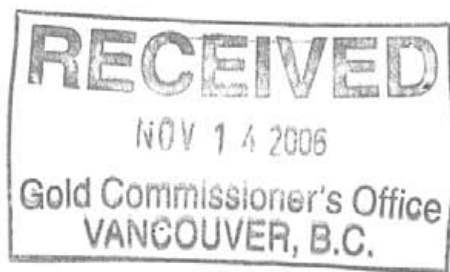


Assessment Report On Exploration Activities

The Golden Wonder
Tenure No. 403289, 403290, 514780, 514781, 514929, 522542

Omenica Mining Division

Hazelton, British Columbia
127 43'W, 55 9'N
NTS 93M



Report By Dwayne McInnis
November 6, 2006

**GEOLOGICAL SURVEY BRANCH
ASSESSMENT REPORT**

28,125

Work Dates
Jan 1 to June 14, 2006
Owner Steve Soby
Operator Ranex Exploration

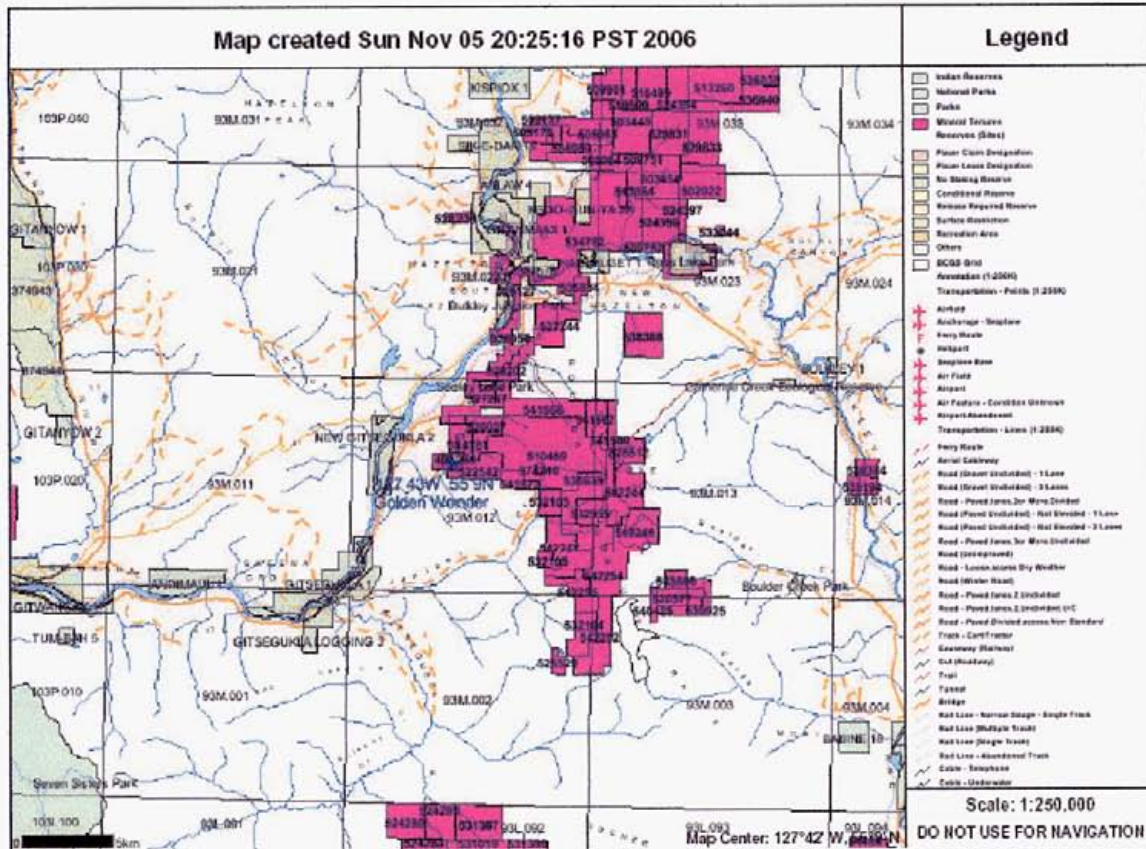
Table Of Contents

i	Location Map
i	Introduction
1	Tenure Location and Past Exploration
2	Current Activities

Appendix

I	Assay Results
II	GPS Report
III	Operator Qualifications
IV	Statement of Expenditures

Location Map

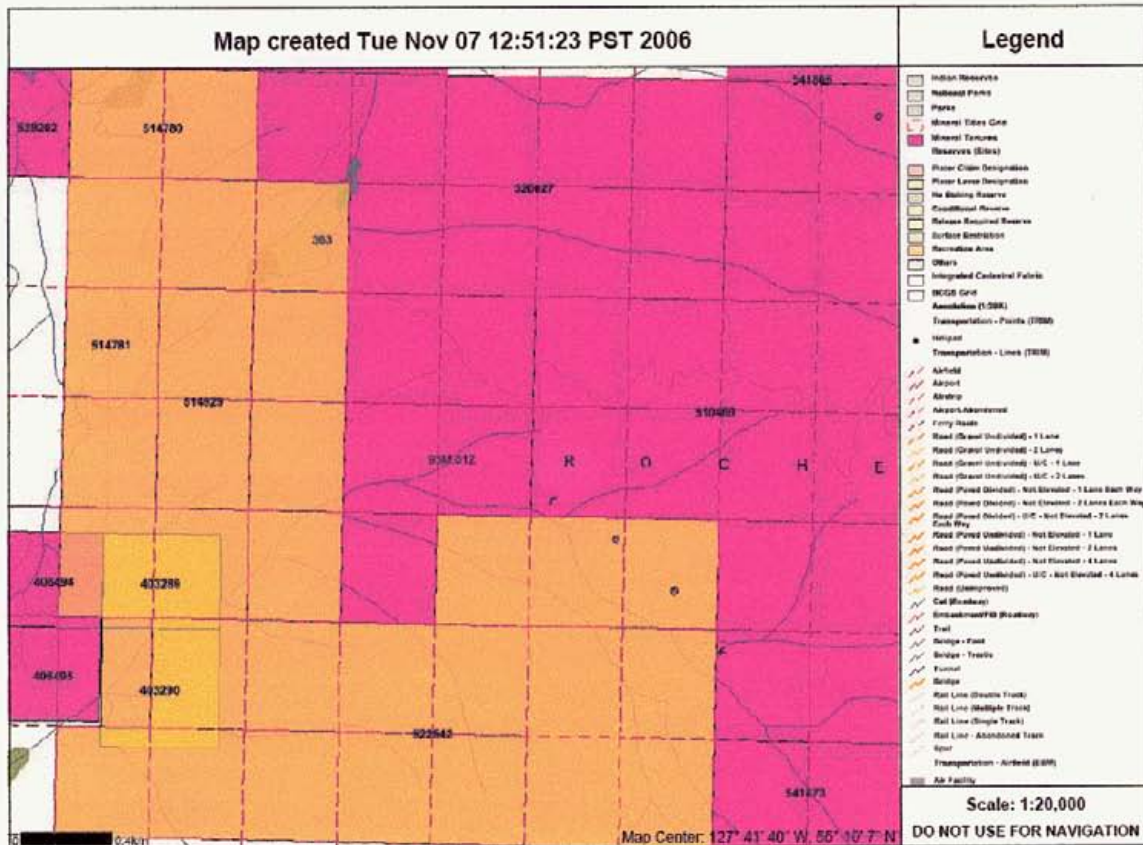


Introduction,

The Golden Wonder properties located approximately 10 km southwest of New Hazelton B.C. Assays up to 8% copper, 20 g/t gold and 180 g/t silver values were reported on the property from samples taken in 2006. Additionally, good Tungsten (6000 ppm), Cobalt (1000 ppm) and Zinc (3000 ppm) values were assayed on the property.

The Golden Wonder

Map of Tenures



Past work on the Golden Wonder consisted of three shafts sunk in the Golden Wonder and Golden Crown crown grants in 1917 and 1918, the deepest of which reached 30 meters, and the excavation of numerous pits and trenches. Between 1970 induced polarity and magnetic surveys were carried out coinciding with a geochemical soil survey and reconnaissance geological mapping was carried out. This was followed by 1000 meters of diamond drilling and 300 meters of percussion drilling on a portion of the property. The best results from this drilling were an 8 foot intercept of 13% copper. In 1979 a more detailed geological mapping and sampling program was undertaken by ASARCO Exploration Company. Rock and soil samples returned best values of .63 oz/ton au, 12.3 oz/ton ag, 1.21% cu, 5.95% pb, 16.18% zn, .14% co and .32%w. ASARCO felt the grades and widths of the mineralization were not sufficient to warrant follow up work and allowed the properties to lapse.

In 2006 prospecting and GPS surveys were carried out for the purpose of assessing and accurately mapping zones of mineralization on the property. Assays reported up to 8% copper, 20 g/t gold and 124 g/t silver values on the property.

Appendix I Assay Results

Certificate Number	Sample Name	Geochem			
		Au ppb	Au G/T	Ag G/T	Cu %
6S0007RG	SW00106	2792			
6S0007RG	SW00206	1378			
6S-033-RA1	Wonder	>10000	20.54	124.0	8.32

Certificate Number	Sample Name	ICP	ICP	ICP	ICP	ICP	ICP	ICP	ICP	ICP	ICP	ICP	ICP	ICP	ICP	ICP	ICP	ICP
		Ag ppm	Al %	As ppm	Ba ppm	Be ppm	Bi ppm	Ca %	Cd ppm	Co ppm	Cr ppm	Cu ppm	Fe %	Hg ppm	K %	La ppm	Mg %	Mn ppm
6S0007RJ	SW00106	137.5	<0.01	>10000	11	<0.5	343	0.28	857	1055	3	>10000	>15.00	<1	<0.01	<10	<0.01	<5
6S0007RJ	SW00206	180.1	<0.01	>10000	<10	<0.5	370	0.13	415	510	<1	>10000	>15.00	<1	<0.01	<10	<0.01	<5

Certificate Number	Sample Name	ICP	ICP	ICP	ICP	ICP	ICP	ICP	ICP	ICP	ICP	ICP	ICP	ICP	ICP	ICP	ICP	ICP
		Mo ppm	Na %	Ni ppm	P ppm	Pb ppm	S %	Sb ppm	Sc ppm	Sr ppm	Th ppm	Ti %	Ti ppm	U ppm	V ppm	W ppm	Zn ppm	Zr ppm
6S0007RJ	SW00106	<2	0.01	42	1020	46	>5.00	7	<1	13	8	<0.01	12	194	<1	6195	3279	31
6S0007RJ	SW00206	<2	0.01	28	1110	136	>5.00	<5	<1	12	<5	<0.01	14	185	<1	1657	3103	31



Ministry of Energy and Mines
Resource Development Division
Titles Branch

**GLOBAL POSITIONING SYSTEM (GPS)
DATA COLLECTION SHEET**

OFFICE USE ONLY	
Event Number	_____
MTI Verification	_____
Date of Verification	_____

Mining Division: _____

Map Number: 093M

Zone: 9

Datum: NAD 83

Data Collected by: Steve Soby

Date(s) Collected: May 2006

Office Use

GPS Receiver Identifier	Northing	Easting
Corner	6114997.50	581488.10

Note: If the space provided is insufficient, copy and attach additional page of this document

GPS Survey Standards and Guidelines for Mineral Titles

Export Version 3.00 3.00 Started.

Using Export Setup: Sample Microsoft Access MDB Setup

The following files in C:\Pfddata\Cumshua will be exported:

R082303B.cor

Reading file R082303B.cor

303 position(s) read.

Of these, 85 position(s) were filtered out.

A total of 1 feature(s) read or created.

Of these, 2 feature(s) have no positions.

1 point feature(s) read.

File R082303B.cor read successfully

1 input file(s) read.

303 position(s) read.

Of these, 85 position(s) were filtered out.

A total of 1 feature(s) read or created.

Of these, 2 feature(s) have no positions.

1 point feature(s) read.

1 quickmark feature(s) read.

1 quickmarks, notes, velocity records or sensor records discarded.

2 feature(s) discarded because they have no positions.

1 feature(s) exported.

1 output file(s) written to C:\Ranex\Client folders\GoldenWonder

c:\ranex\client folders\GoldenWonder\r082303b.mdb

The file C:\Ranex\Client folders\GoldenWonder\R082303B.inf contains information on the settings used.

The file C:\Program Files\Common Files\Trimble\PFOffice\Config\expfiles.txt contains a list of the files created.

Setup Used: Sample Microsoft Access MDB Setup
 Export Format: Microsoft Access MDB
 Data Type: Features
 Feature Selection: Export All Features
 Not In Feature Positions: Not Used
 Export Notes: No
 Export Velocity Records: No
 Export Sensor Records: No
 Export Menu Attribute As: Attribute Value
 Generated Attributes: Datafile
 Unfilt Pos
 Filt Pos
 GPS Height
 Vert Prec
 Horz Prec

Position Filter Details:

Filter By: GPS Criteria
 Maximum PDOP: Any
 Maximum HDOP: Any
 Min Number Of SVs: 3D (5 or more SVs)
 Uncorrected: Yes
 P(Y) Code: Yes
 Real-time WAAS: Yes
 Real-time Code: Yes
 Postprocessed Code: Yes
 Real-time Carrier Float: Yes
 Postprocessed Carrier Float: Yes
 RTK Fixed: Yes
 Postprocessed Carrier Fixed: Yes
 Non-GPS: Yes
 Coordinate System: UTM
 Coordinate Zone: 9 North
 Datum: WGS 1984
 Coordinate Units: Meters
 Altitude Units: Meters
 Altitude Reference: MSL
 Geoid Model: EGM96 (Global)
 Include Altitude: No
 Distance Units: Meters
 Area Units: Hectares
 Velocity Units: Kilometers Per Hour
 Precision Units: Centimeters
 North/East DP: 3
 Altitude DP: 3
 Distance DP: 3
 Area DP: 3

Data Dictionary

Point_generic - Point Feature

Comment - String, Length = 32
 Datafile - String, Length = 20
 Unfilt Pos - Numeric, DP = 0, Min = 0, Max = 0, Default = 0
 Filt Pos - Numeric, DP = 0, Min = 0, Max = 0, Default = 0
 GPS Height - Numeric, DP = 3, Min = 0.000, Max = 0.000, Default = 0.000
 Vert Prec - Numeric, DP = 1, Min = 0.0, Max = 0.0, Default = 0.0
 Horz Prec - Numeric, DP = 1, Min = 0.0, Max = 0.0, Default = 0.0

Line_generic - Line Feature

R082320B.inf

Comment - String, Length = 32

Datafile - String, Length = 20

Unfilt Pos - Numeric, DP = 0, Min = 0, Max = 0, Default = 0

Filt Pos - Numeric, DP = 0, Min = 0, Max = 0, Default = 0

Area_generic - Area Feature

Comment - String, Length = 32

Datafile - String, Length = 20

Unfilt Pos - Numeric, DP = 0, Min = 0, Max = 0, Default = 0

Filt Pos - Numeric, DP = 0, Min = 0, Max = 0, Default = 0

Appendix III Qualifications

Ranex Exploration is a full service exploration services provider based in Smithers, B.C. The prospecting was conducted on this property by Sam Watling and Stephen Soby who are self educated prospectors who each have worked in the field of mineral exploration for over a decade.

Appendix IV
Statement of Expenses

Services Provided by Ranex Exploration

Prospector/GPS Operator/\$350/day

4 days Prospecting/GPS Operation \$1400.00

GPS Rental and Report Preparation

1 hour @ \$50/hour GPS Tech \$50.00

3 days @ \$150/day GPS Rental \$450.00

Total 2006 Expenditures \$1900