

**2011**

# **PROSPECTING REPORT**

**“Valley Gap Property”**

**EVENT # 5157854    TENURE # 591220**

**Tenure Name: Valley Gap**

**Princeton Area – Similkameen River, BC**

**Similkameen Mining Division**

**Map 092H**

**Central Coordinate Reference**

**120° 24' 39.7" W Longitude – 49° 27' 37.3" N Latitude**

**Report Date – January 5, 2012**

**Tenure Owner – William L. Amey**

**FMC 145191**

## INDEX

Page	0.....	Copy of Tenure Renewal & Event Number
	1.....	Cover Page
	2.....	Index
	3.....	Introduction / Location & Access / Summary / Conclusion / Photo Insert
	4.....	Work Evaluation & Cost Statement / Attending Parties & Qualifications / Affidavit
	5.....	General Location Reference - Map 1
	6.....	Work Area - Map 2
	7.....	Work Area - Map 3

**Note: Unless otherwise referenced, map submissions are enhanced excerpts from the BC Ministry's Provincial Mapping System. Scale as that shown.**

## Introduction

The “Valley Gap” placer property, tenure # 591220 a one cell claim comprising 21 hectares, is situated in the southern-most part of the province, within the Similkameen River Valley system. The river commences deep within Manning Provincial Park, flows northward to Princeton, thence more or less eastward, to where it then crosses the International Border into Washington State, west of Osoyoos. Excepting work previously conducted by the author, no records have been found which indicated placer activities had been engaged along this stretch of the river, excepting possibly the occasional recreational enthusiast. And in that dimension, most generally using an aluminum pie plate. Prior to the property’s staking, sampling conducted over numerous visits to the area, held showings of flake and fine gold, and in places, up to fifty colors per small pan. Since glacial breakup, this region of the Similkameen River (that east of the settlement of Princeton) has received, and annually continues to receive, precious metals being deposited within the riverbed, along its shoreline, and in its more historical perspective, throughout the valley’s floor. Source material is received from both the Upper Similkameen River and the Tulameen River. A prior soil assay by an independent party showed the soils and gravels to carry high values in both gold and platinum.

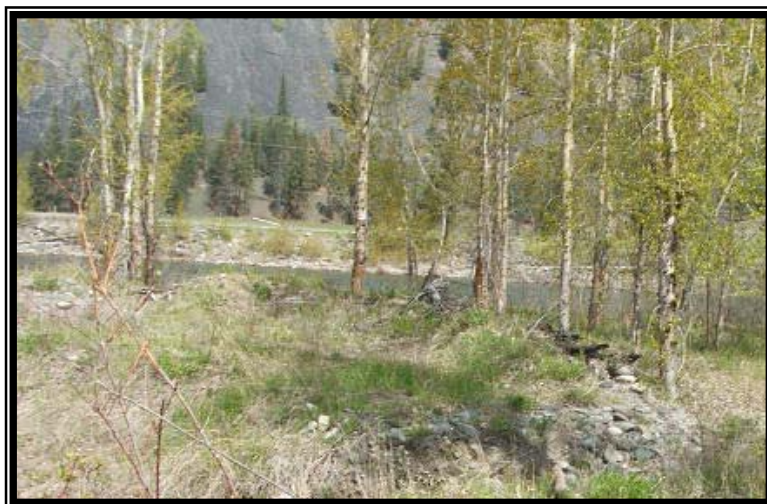
## Location & Access

The Similkameen River laterally cuts the Valley Gap claim, approximately 8 kilometres east of the Town of Princeton, BC, or slightly over 100 kilometres east of Hope, BC. Access would be considered excellent, and may be gained from either side of the Similkameen River, with BC Highway #3 cutting through the claim on the south side of the river and The Old Hedley Road, similarly cutting the claim on the north side of the Similkameen.

## Summary

Prospecting on the Valley Gap property was conducted on April 20, 2010, over the traverse illustrated on Map 2, hereto attached. Whereas the river’s water level had risen somewhat from its seasonal low, attention was focused higher on the bank and into the alder flood zone. Approximately one cubic metre of gravels were dug from various small test pits, to depths ranging up to approximately 60cm, were after they were classified then hand panned, resulting in slightly over 0.70 grams of Au, with trace Pt flecks.

The Valley Gap tenure was renewed to facilitate further placer activities on the property.



**SUMMARY OF EXPLORATION EXPENDITURES**

Work Date – April 20, 2011

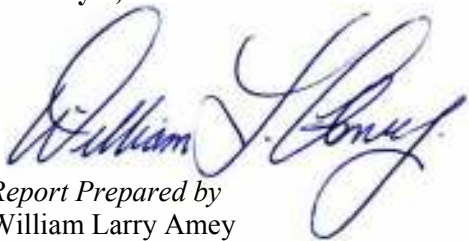
Kevin Carter – Exploration Assistant	(½ day)	\$ 137.50
Larry Amey – Project Management, Explorations	(½ day)	\$ 250.00
Accommodations.....	1/5	\$ 84.00
Meals.....	1/5	\$ 56.00
4x4 Truck – 1994 Ford – 305.6 km @ \$1.60 per km (all in)		\$ 488.96
Tenure Maintenance Fees (to Dec 1, 2013)		\$ 89.39
Miscellaneous Supplies & Sundries		\$ 23.86
Exploration Report, Cartography & Photographic Preparations		\$ 200.00
Total		<u>\$1,329.71</u>

**Qualifications:**

Kevin Carter - - 3 years placer and gemstone prospecting experience, with fifteen years at rock and mineral collecting.

Self - - 30 years exploration experience – extensive (in-depth) research into mineralogy and deposit profiles, post glacial terrain physiology, geological formations, comparative geosciences modeling, with advance studies into atmogeology; biogeology & hydrology. Advanced skills in cartography and digital data analysis.

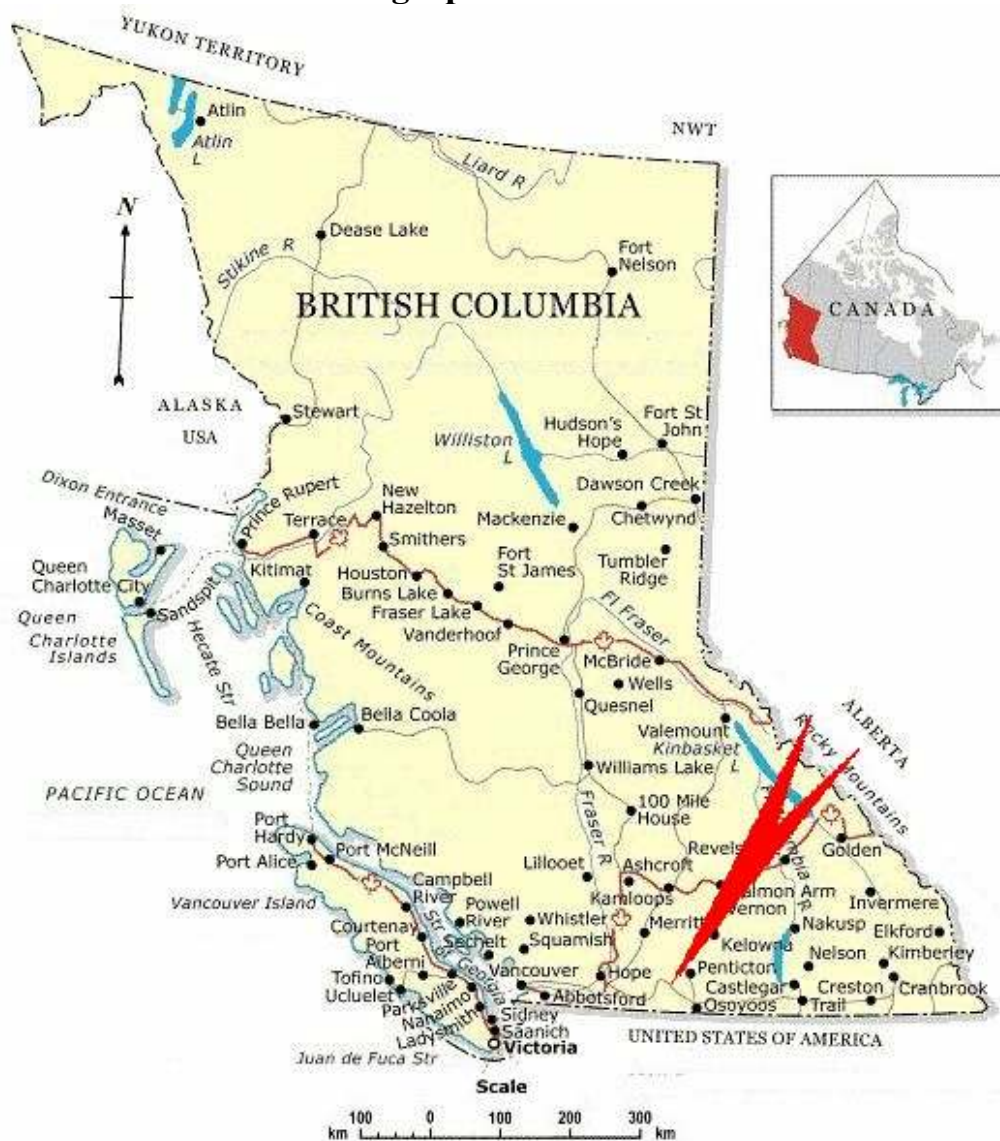
**January 5, 2012**



Report Prepared by  
William Larry Amey  
145191

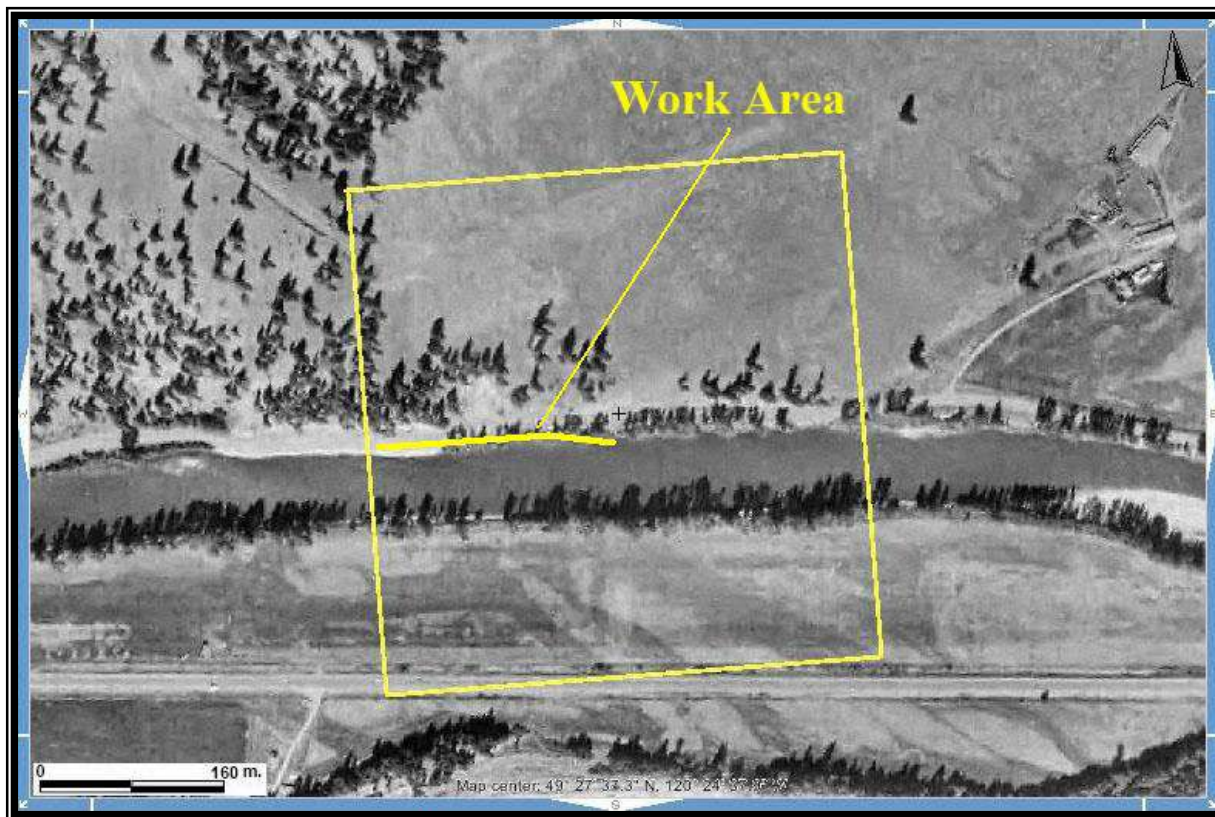
# REFERENCE MAP 1

## Geographical Location



**MAP 2**

**Work Area**



**Scale 1:4,000**

**Map 092H Excerpt**

**Tenure Coordinate Reference**

**120° 24' 39.7\"**



### MAP 3

### Contour Map



Scale 1:4,000  
Map 092H Excerpt  
Tenure Coordinate Reference  
120° 24' 39.7" W Longitude – 49° 27' 37.3" N Latitude